

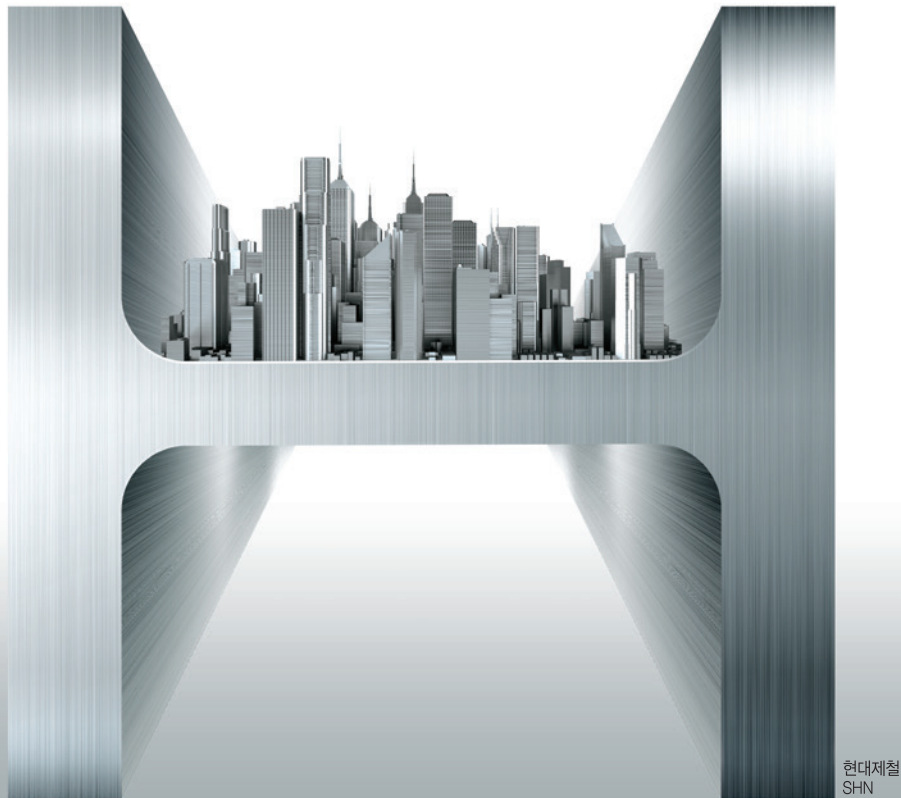
백년을 생각합니다.

현대제철, 건축구조용압연H형강(SHN)

건축구조용 H형강은 저온충격 성능, 소성변형 능력, 용접성 등이 뛰어나 모든 건축물에서 탁월한 성능을 자랑하며, 더욱 강력해진 내진(耐震) 성능은 지진으로부터 건축물을 안전하게 보호합니다.

건축물에 최적화된 고성능 건축구조용 H형강은 잠실 롯데월드타워, 여의도 국제금융센터, 상암동 조선일보 사옥 등 국내 대형 건축물뿐 아니라 남극 장보고 과학기지, 콜롬비아 보고타 석탄화력발전소, 필리핀 아레나 콘서트 홀 등 해외 프로젝트 건축물에도 적용되면서 뛰어난 성능을 인정받고 있습니다.

백년을 생각하는 건축, 현대제철의 기술력이 함께합니다.



현대제철
SHN

지진에 강한 철
H(CORE)



KS H형강
표준규격 **82**개

HS H형강
신규규격 **55**개

RH⁺

Hot rolled H-sections of Hyundai Steel

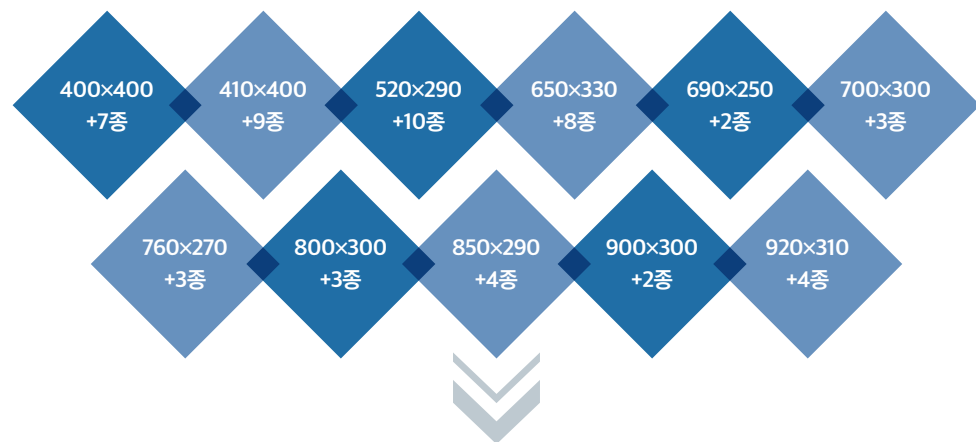
HYUNDAI
STEEL

현대제철주식회사
신수요개발1팀
형강KAM팀
형강유통팀

서울시 서초구 강남대로 573 (잠원동)
TEL 02-772-2182~8
TEL 02-772-2082~6
TEL 02-772-2092~5
www.hyundai-steel.com

Characteristic

| 신규 규격 확대 55종

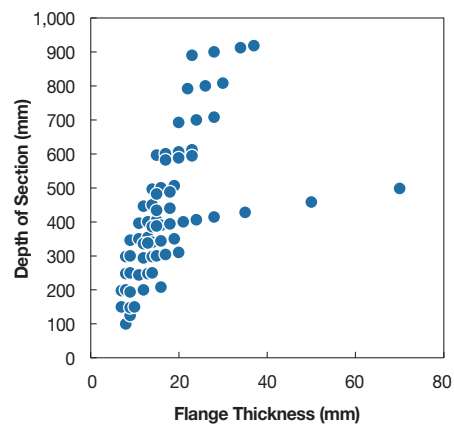


KS 강재의 항복강도 상황에 따른 강구조기준에 적합한 표준단면 규격 확대

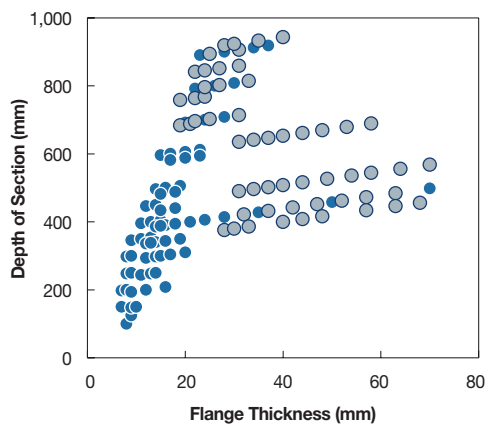
구조적으로 최적화된 규격 확대로 강재량 절감

내진 판폭두께비 조건 등 강구조 기준에 적합한 규격 선정으로 안전성 향상

| 기존 KS 규격 82종



| 신규 규격 확대 55종



Rolled H Section

| RH 생산 및 품질 관리



| RH*의 장점



Member List

■ 신규 추가 규격

공칭차수	단위 무게	표준단면치수						단면적	단면2차모멘트			단면 2차 반경		단면계수		소성 단면계수		뒤틀림 상수	비틀림 상수
	Unit Weight (kg/m)	Sectional Dimension (mm)						Sectional Area (cm2)	2nd Moment of Inertia (cm4)			Radius of Gyration (cm)		Modulus of Section (cm³)		Plastic Section Modulus (mm3x103)		Warping Constant (cm6, x103)	Torsional Constant (cm⁴)
		W	H	B	t1	t2	r	A	Ix	Iy	ix	iy	Sx	Sy	Zx	Zy	A	A	
100×100	17.2	100	100	6	8	10	21.90	383	134	4.18	2.47	76.5	26.7	88	41	2.82	5.42		
125×125	23.8	125	125	7	9	10	30.31	847	294	5.29	3.11	135.6	47.0	154	72	9.86	8.68		
150×75	14.0	150	75	5	7	8	17.85	666	49	6.11	1.66	88.8	13.2	102	21	2.52	2.90		
150×100	21.1	148	100	6	9	11	26.84	1,021	151	6.17	2.37	138.0	30.1	157	47	7.25	7.48		
150×150	31.5	150	150	7	10	11	40.14	1,641	563	6.39	3.75	218.8	75.1	246	115	27.56	13.76		
200×100	18.2	198	99	5	7	11	23.18	1,582	114	8.26	2.21	159.8	23.0	180	36	10.32	3.85		
	21.3	200	100	6	8	11	27.16	1,844	134	8.24	2.22	184.4	26.8	209	42	12.29	5.89		
200×150	30.6	194	150	6	9	13	39.01	2,690	507	8.30	3.61	277.3	67.6	309	104	43.32	11.02		
200×200	49.9	200	200	8	12	13	63.53	4,716	1,602	8.62	5.02	471.6	160.2	526	244	141.38	30.16		
	56.2	200	204	12	12	13	71.53	4,982	1,702	8.35	4.88	498.2	166.8	566	257	150.03	43.59		
	65.7	208	202	10	16	13	83.69	6,530	2,200	8.83	5.13	627.9	217.9	710	332	202.57	67.22		
250×125	25.7	248	124	5	8	12	32.68	3,537	255	10.40	2.79	285.3	41.1	319	64	36.61	6.69		
	29.6	250	125	6	9	12	37.66	4,052	294	10.37	2.79	324.1	47.0	366	73	42.54	9.79		
250×175	44.1	244	175	7	11	16	56.24	6,121	984	10.43	4.18	501.7	112.5	558	173	133.35	23.18		
250×250	64.4	244	252	11	11	16	82.06	8,787	2,938	10.35	5.98	720.2	233.2	805	358	398.19	44.60		
	66.5	248	249	8	13	16	84.70	9,930	3,347	10.83	6.29	800.8	268.9	883	408	461.81	46.63		
	72.4	250	250	9	14	16	92.18	10,833	3,649	10.84	6.29	866.6	291.9	961	444	507.65	59.07		
	82.2	250	255	14	14	16	104.70	11,484	3,877	10.47	6.08	918.7	304.1	1,039	468	538.72	87.27		
300×150	32.0	298	149	6	8	13	40.80	6,318	442	12.44	3.29	424.0	59.3	475	92	92.73	8.79		
	36.7	300	150	7	9	13	46.78	7,209	508	12.41	3.29	480.6	67.7	542	105	107.17	12.73		
300×200	56.8	294	200	8	12	18	72.38	11,338	1,603	12.52	4.71	771.3	160.3	859	247	318.10	36.13		
	65.4	298	201	9	14	18	83.36	13,311	1,899	12.64	4.77	893.4	188.9	1,000	291	382.07	53.63		
350×175	41.4	346	174	6	9	14	52.68	11,094	792	14.51	3.88	641.3	91.0	716	140	224.36	13.74		
	49.6	350	175	7	11	14	63.14	13,559	984	14.65	3.95	774.8	112.5	868	174	282.29	23.04		
	57.8	354	176	8	13	14	73.68	16,097	1,184	14.78	4.01	909.4	134.5	1,022	208	343.38	36.11		
300×300	84.5	294	302	12	12	18	107.70	16,864	5,516	12.51	7.16	1,150.0	365.3	1,277	560	1,100.00	69.05		
	87.0	298	299	9	14	18	110.80	18,849	6,241	13.04	7.51	1,270.0	417.5	1,389	634	1,260.00	71.56		
	94.0	300	300	10	15	18	119.80	20,410	6,755	13.05	7.51	1,360.0	450.3	1,501	684	1,370.00	89.02		
	106.0	300	305	15	15	18	134.80	21,535	7,105	12.64	7.26	1,440.0	465.9	1,614	716	1,440.00	128.30		
	106.0	304	301	11	17	18	134.80	23,380	7,733	13.17	7.57	1,540.0	513.8	1,706	781	1,590.00	125.41		
	130.0	310	305	15	20	18	165.30	28,629	9,469	13.16	7.57	1,850.0	620.9	2,079	949	1,990.00	221.52		
350×250	142.0	310	310	20	20	18	180.80	29,870	9,954	12.85	7.42	1,930.0	642.2	2,199	992	2,090.00	293.42		
	69.2	336	249	8	12	20	88.15	18,504	3,092	14.49	5.92	1,100.0	248.3	1,215	380	810.32	44.92		
	79.7	340	250	9	14	20	101.50	21,676	3,651	14.61	6.00	1,280.0	292.1	1,412	447	968.66	66.43		
350×350	106.0	338	351	13	13	20	135.30	28,190	9,380	14.43	8.33	1,670.0	534.5	1,851	818	2,470.00	101.44		
	115.0	344	348	10	16	20	146.00	33,295	11,245	15.10	8.78	1,940.0	646.2	2,122	980	3,020.00	121.04		
	131.0	344	354	16	16	20	166.60	35,330	11,846	14.56	8.43	2,050.0	669.3	2,299	1,027	3,180.00	180.25		
	137.0	350	350	12	19	20	173.90	40,295	13,586	15.22	8.84	2,300.0	776.3	2,545	1,179	3,720.00	199.75		
	156.0	350	357	19	19	20	198.40	42,796	14,433	14.69	8.53	2,450.0	808.6	2,760	1,244	3,950.00	294.05		
400×200	56.6	396	199	7	11	16	72.16	20,019	1,447	16.66	4.48	1,010.0	145.4	1,288	224	535.38	27.05		
	66.0	400	200	8	13	16	84.12	23,704	1,736	16.79	4.54	1,190.0	173.6	1,326	268	649.00	42.05		
	75.5	404	201	9	15	16	96.16	27,486	2,034	16.91	4.60	1,360.0	202.4	1,528	312	768.01	62.11		
400×300	94.3	386	299	9	14	22	120.10	33,678	6,244	16.75	7.21	1,740.0	417.6	1,918	637	2,160.00	79.83		
	107.0	390	300	10	16	22	136.00	38,674	7,208	16.86	7.28	1,980.0	480.5	2,188	733	2,520.00	113.27		

■ 신규 추가 규격

공칭차수	단위 무게	표준단면치수					단면적	단면2차모멘트		단면 2차 반경		단면계수		소성 단면계수		뒤틀림 상수	비틀림 상수	
		Sectional Dimension (mm)						Sectional Area (cm2)	2nd Moment of Inertia (cm4)		Radius of Gyration (cm)		Modulus of Section (cm³)		Plastic Section Modulus (mmx103)			
		W	H	B	t1	t2			r	A	Ix	Iy	ix	iy	Sx			Sy
400x400	140.0	388	402	15	15	22	178.50	48,965	16,258	16.56	9.54	2,520.0	808.9	2,802	1,237	5,650.00	174.29	
	147.0	394	398	11	18	22	186.80	56,145	18,923	17.34	10.06	2,850.0	950.9	3,119	1,441	6,680.00	193.38	
	168.0	394	405	18	18	22	214.40	59,713	19,955	16.69	9.65	3,030.0	985.4	3,390	1,511	7,040.00	289.96	
	172.0	400	400	13	21	22	218.70	66,621	22,413	17.45	10.12	3,330.0	1,120.0	3,673	1,700	8,040.00	303.9	
	197.0	400	408	21	21	22	250.70	70,888	23,809	16.82	9.75	3,540.0	1,170.0	3,993	1,794	8,540.00	450.42	
	200.0	406	403	16	24	22	254.90	78,039	26,200	17.50	10.14	3,840.0	1,300.0	4,280	1,977	9,550.00	467.01	
	232.0	414	405	18	28	22	295.40	92,771	31,027	17.72	10.25	4,480.0	1,530.0	5,026	2,331	11,550.00	720.50	
	264.0	422	407	20	32	22	336.20	108,177	35,991	17.94	10.35	5,130.0	1,770.0	5,793	2,692	13,670.00	1,050.00	
	283.0	428	407	20	35	22	360.70	119,204	39,362	18.18	10.45	5,570.0	1,930.0	6,312	2,941	15,190.00	1,320.00	
	306.0	432	410	23	37	22	389.90	128,745	42,549	18.17	10.45	5,960.0	2,080.0	6,802	3,164	16,580.00	1,620.00	
	349.0	442	413	26	42	22	444.20	150,479	49,378	18.41	10.54	6,810.0	2,390.0	7,844	3,650	19,720.00	2,360.00	
	392.0	452	416	29	47	22	499.00	173,419	56,482	18.64	10.64	7,670.0	2,720.0	8,920	4,150	23,120.00	3,310.00	
	415.0	458	417	30	50	22	528.60	187,138	60,524	18.82	10.70	8,170.0	2,900.0	9,540	4,436	25,150.00	3,930.00	
	435.0	462	419	32	52	22	554.50	197,605	63,869	18.88	10.73	8,550.0	3,050.0	10,031	4,665	26,790.00	4,480.00	
	479.0	472	422	35	57	22	610.50	223,080	71,543	19.12	10.83	9,450.0	3,390.0	11,176	5,194	30,740.00	5,900.00	
	534.0	484	426	39	63	22	680.50	255,787	81,377	19.39	10.94	10,570.0	3,820.0	12,621	5,863	35,970.00	8,020.00	
	605.0	498	432	45	70	22	770.10	297,910	94,362	19.67	11.07	11,960.0	4,370.0	14,457	6,725	43,080.00	11,280.00	
	410x400	218.0	376	393	17	28	21	278.30	72,331	28,346	16.12	10.09	3,850.0	1,440.0	4,323	2,190	8,580.00	673.12
237.0		380	395	19	30	21	301.60	78,861	30,841	16.17	10.11	4,150.0	1,560.0	4,693	2,375	9,440.00	842.56	
261.0		386	397	21	33	21	333.00	88,511	34,448	16.30	10.17	4,590.0	1,740.0	5,221	2,642	10,720.00	1,120.00	
318.0		400	401	25	40	21	404.60	112,107	43,041	16.65	10.31	5,610.0	2,150.0	6,473	3,273	13,930.00	1,980.00	
349.0		408	403	27	44	21	444.80	126,330	48,063	16.85	10.39	6,190.0	2,390.0	7,204	3,638	15,900.00	2,610.00	
384.0		416	406	30	48	21	489.50	141,811	53,626	17.02	10.47	6,820.0	2,640.0	7,998	4,036	18,130.00	3,420.00	
462.0		434	412	36	57	21	588.70	178,904	66,582	17.43	10.63	8,240.0	3,230.0	9,834	4,950	23,610.00	5,770.00	
511.0		446	415	39	63	21	651.50	205,052	75,228	17.74	10.75	9,200.0	3,630.0	11,071	5,556	27,520.00	7,730.00	
555.0		456	418	42	68	21	706.70	228,526	82,996	17.98	10.84	10,020.0	3,970.0	12,163	6,091	31,150.00	9,740.00	
450x200	66.2	464	199	8	12	18	84.30	28,697	1,580	18.45	4.33	1,290.0	158.8	1,450	247	742.18	38.61	
	76.0	450	200	9	14	18	96.76	33,451	1,872	18.59	4.40	1,490.0	187.2	1,679	291	887.11	57.14	
440x300	106.0	434	299	10	15	24	135.00	46,794	6,692	18.62	7.04	2,160.0	447.7	2,385	686	2,930.00	104.88	
	124.0	440	300	11	18	24	157.40	56,069	8,111	18.87	7.18	2,550.0	540.8	2,825	828	3,610.00	162.33	
500x200	79.5	496	199	9	14	20	101.30	41,869	1,845	20.33	4.27	1,690.0	185.4	1,915	290	1,070.00	60.89	
	89.6	500	200	10	16	20	114.20	47,846	2,141	20.47	4.33	1,910.0	214.1	2,175	335	1,250.00	85.83	
	103.0	506	201	11	19	20	131.30	56,516	2,581	20.75	4.43	2,230.0	256.8	2,541	401	1,520.00	130.74	
500x300	114.0	482	300	11	15	26	145.50	60,367	6,764	20.37	6.82	2,500.0	450.9	2,791	695	3,680.00	122.30	
	128.0	488	300	11	18	26	163.50	70,952	8,114	20.83	7.04	2,910.0	540.9	3,228	830	4,470.00	170.20	
	198.0	490	285	17	31	18	252.20	105,543	11,983	20.46	6.89	4,310.0	840.9	4,892	1,293	6,300.00	663.28	
520x300	219.0	496	287	19	34	18	279.30	117,968	13,426	20.55	6.93	4,760.0	935.6	5,437	1,443	7,150.00	882.89	
	241.0	502	289	21	37	18	306.50	130,796	14,924	20.66	6.98	5,210.0	1,030.0	5,992	1,596	8,050.00	1,150.00	
	262.0	508	291	23	40	18	334.00	144,036	16,479	20.77	7.02	5,670.0	1,130.0	6,559	1,755	9,000.00	1,460.00	
	285.0	516	292	24	44	18	362.50	160,438	18,315	21.04	7.11	6,220.0	1,250.0	7,222	1,942	10,170.00	1,890.00	
	320.0	526	295	27	49	18	407.40	183,892	21,045	21.25	7.19	6,990.0	1,430.0	8,190	2,215	11,930.00	2,620.00	
	356.0	536	298	30	54	18	453.00	208,537	23,924	21.46	7.27	7,780.0	1,610.0	9,189	2,499	13,830.00	3,530.00	
	387.0	544	301	33	58	18	493.20	229,942	26,502	21.59	7.33	8,450.0	1,760.0	10,054	2,750	15,570.00	4,450.00	
	429.0	556	304	36	64	18	546.00	261,555	30,148	21.89	7.43	9,410.0	1,980.0	11,279	3,102	18,140.00	5,960.00	
	471.0	568	307	39	70	18	599.50	294,943	33,984	22.18	7.53	10,390.0	2,210.0	12,546	3,468	20,930.00	7,770.00	

Member List

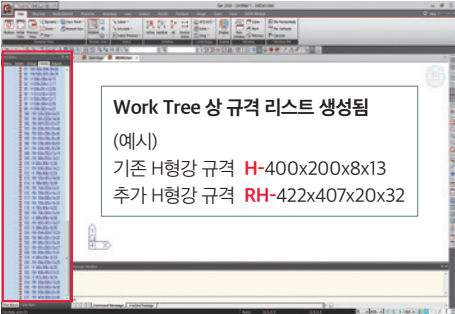
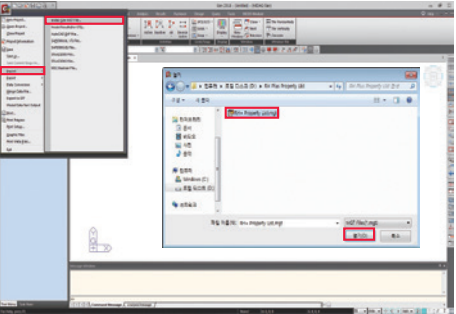
■ 신규 추가 규격

공칭차수	단위 무게		표준단면치수					단면적		단면2차모멘트		단면 2차 반경		단면계수		소성 단면계수		뒤틀림 상수	비틀림 상수
	Unit Weight (kg/m)		Sectional Dimension (mm)					Sectional Area (cm ²)		2nd Moment of Inertia (cm ⁴)		Radius of Gyration (cm)		Modulus of Section (cm ³)		Plastic Section Modulus (mm ³ ×10 ³)		Warping Constant (cm ⁶ , ×10 ³)	Torsional Constant (cm ⁴)
	W	H	B	t1	t2	r	A	Ix	Iy	ix	iy	Sx	Sy	Zx	Zy	A	A	A	A
600×200	94.6	596	199	10	15	22	120.50	68,716	1,980	23.88	4.05	2,310.0	199.0	2,651	315	1,660.00		83.29	
	106.0	600	200	11	17	22	134.40	77,632	2,278	24.03	4.12	2,590.0	227.8	2,979	361	1,930.00		113.63	
	120.0	606	201	12	20	22	152.50	90,395	2,721	24.35	4.22	2,980.0	270.7	3,433	429	2,320.00		166.18	
	134.0	612	202	13	23	22	170.70	103,487	3,176	24.62	4.31	3,380.0	314.5	3,893	498	2,740.00		234.95	
600×300	137.0	582	300	12	17	28	174.50	102,710	7,670	24.26	6.63	3,530.0	511.3	3,963	793	6,110.00		177.14	
	151.0	588	300	12	20	28	192.50	118,110	9,020	24.77	6.85	4,020.0	601.3	4,489	928	7,260.00		237.41	
	175.0	594	302	14	23	28	222.40	137,321	10,585	24.85	6.90	4,620.0	701.0	5,198	1,085	8,610.00		354.72	
650×350	244.0	635	328	18	31	24	311.40	217,764	18,271	26.44	7.66	6,860.0	1,110.0	7,758	1,721	16,630.00		827.94	
	265.0	641	329	19	34	24	337.50	239,986	20,224	26.67	7.74	7,490.0	1,230.0	8,488	1,899	18,590.00		1,060.00	
	291.0	647	331	21	37	24	370.20	264,967	22,421	26.75	7.78	8,190.0	1,350.0	9,333	2,098	20,800.00		1,380.00	
	311.0	653	332	22	40	24	396.60	288,265	24,461	26.96	7.85	8,830.0	1,470.0	10,085	2,282	22,920.00		1,700.00	
	343.0	661	334	24	44	24	436.40	321,740	27,406	27.15	7.92	9,730.0	1,640.0	11,176	2,545	26,000.00		2,250.00	
	374.0	669	336	26	48	24	476.50	356,271	30,448	27.34	7.99	10,650.0	1,810.0	12,289	2,815	29,260.00		2,910.00	
	422.0	679	340	30	53	24	537.20	404,866	34,869	27.45	8.06	11,930.0	2,050.0	13,882	3,202	34,010.00		4,020.00	
	459.0	689	342	32	58	24	585.00	450,086	38,848	27.74	8.15	13,060.0	2,270.0	15,282	3,549	38,490.00		5,190.00	
	141.0	684	252	12	19	28	180.00	139,610	5,089	27.85	5.32	4,080.0	403.9	4,649	635	5,600.00		198.76	
700×250	155.0	688	253	13	21	28	197.00	154,183	5,693	27.98	5.38	4,480.0	450.0	5,113	708	6,300.00		256.22	
	166.0	692	300	13	20	28	211.50	172,424	9,025	28.55	6.53	4,980.0	601.6	5,629	936	10,160.00		260.95	
	175.0	696	300	13	22	28	223.50	186,873	9,925	28.92	6.66	5,370.0	661.6	6,046	1,026	11,240.00		312.89	
	185.0	700	300	13	24	28	235.50	201,489	10,825	29.25	6.78	5,760.0	721.6	6,464	1,116	12,340.00		375.06	
	195.0	702	301	14	25	28	248.50	211,743	11,391	29.19	6.77	6,030.0	756.9	6,798	1,173	13,020.00		431.37	
	215.0	708	302	15	28	28	273.60	237,141	12,887	29.44	6.86	6,700.0	853.4	7,560	1,323	14,860.00		579.27	
	235.0	714	303	16	31	28	298.90	263,075	14,410	29.67	6.94	7,370.0	951.2	8,331	1,474	16,760.00		759.80	
	163.0	758	265	14	19	28	208.20	189,485	5,923	30.17	5.33	5,000.0	447.0	5,774	711	8,050.00		248.71	
	176.0	764	265	14	22	28	224.10	212,505	6,854	30.79	5.53	5,560.0	517.3	6,379	817	9,390.00		314.17	
750×300	190.0	768	266	15	24	28	242.40	231,829	7,563	30.93	5.59	6,040.0	568.7	6,932	899	10,420.00		393.90	
	191.0	792	300	14	22	28	243.40	253,639	9,931	32.28	6.39	6,410.0	662.1	7,288	1,036	14,670.00		341.58	
	200.0	796	300	14	24	28	255.40	272,552	10,831	32.67	6.51	6,850.0	722.1	7,765	1,126	16,090.00		403.88	
800×300	210.0	800	300	14	26	28	267.40	291,657	11,731	33.03	6.62	7,290.0	782.1	8,243	1,216	17,520.00		477.19	
	221.0	802	301	15	27	28	281.50	305,579	12,308	32.95	6.61	7,620.0	817.8	8,644	1,274	18,430.00		544.30	
	241.0	808	302	16	30	28	307.60	339,234	13,813	33.21	6.70	8,400.0	914.8	9,535	1,426	20,840.00		716.60	
	262.0	814	303	17	33	28	333.90	373,523	15,347	33.45	6.78	9,180.0	1,010.0	10,435	1,579	23,330.00		924.00	
850×300	200.0	841	291	15	22	30	255.30	289,907	9,076	33.70	5.96	6,890.0	623.8	7,928	987	15,150.00		376.52	
	210.0	845	291	15	24	30	267.00	310,587	9,897	34.11	6.09	7,350.0	680.2	8,419	1,072	16,610.00		436.90	
	230.0	851	292	16	27	30	292.90	347,111	11,250	34.43	6.20	8,160.0	770.5	9,340	1,213	19,020.00		579.32	
	255.0	859	293	17	31	30	324.90	395,086	13,049	34.87	6.34	9,200.0	890.7	10,524	1,400	22,270.00		806.25	
900×300	213.0	890	299	15	23	28	270.90	345,314	10,285	35.70	6.16	7,760.0	688.0	8,914	1,085	19,260.00		405.82	
	222.0	894	299	15	25	28	282.80	369,105	11,176	36.13	6.29	8,260.0	747.6	9,447	1,174	21,030.00		473.46	
	243.0	900	300	16	28	28	309.80	411,267	12,644	36.44	6.39	9,140.0	843.0	10,454	1,324	23,950.00		628.06	
	264.0	906	301	17	31	28	336.80	454,157	14,141	36.72	6.48	10,030.0	939.6	11,472	1,475	26,970.00		815.98	
	286.0	912	302	18	34	28	364.00	497,785	15,667	36.98	6.56	10,920.0	1,040.0	12,501	1,629	30,080.00		1,040.00	
	307.0	918	303	19	37	28	391.30	542,159	17,221	37.22	6.63	11,810.0	1,140.0	13,541	1,785	33,290.00		1,300.00	
	255.0	919	304	17	28	30	324.70	442,985	13,166	36.94	6.37	9,640.0	866.2	11,078	1,368	26,020.00		684.22	
950×300	272.0	923	305	18	30	30	346.10	475,324	14,250	37.06	6.42	10,300.0	934.4	11,851	1,477	28,280.00		824.99	
	318.0	933	308	21	35	30	404.60	561,294	17,136	37.25	6.51	12,030.0	1,110.0	13,919	1,769	34,360.00		1,290.00	
	349.0	943	309	22	40	30	444.80	636,031	19,772	37.81	6.67	13,490.0	1,280.0	15,586	2,028	40,100.00		1,770.00	

Midas Program

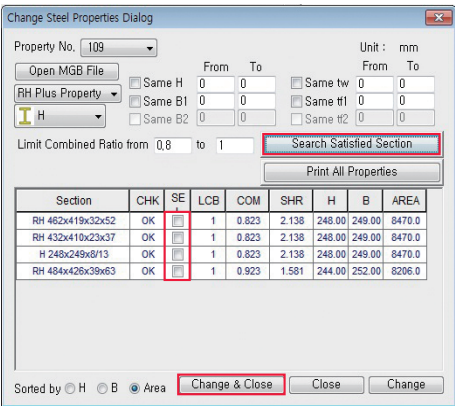
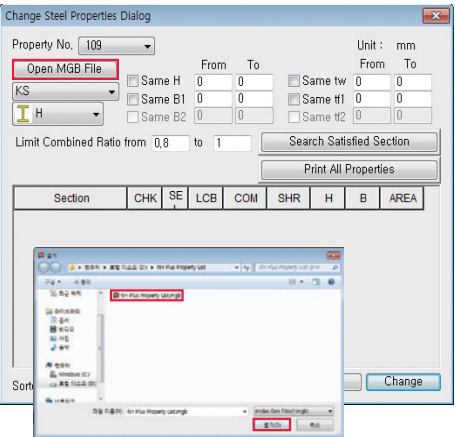
■ MIDAS Gen에서 규격확대 리스트 불러오기

- 마이다스 프로그램에서 Import → midas Gen MGT File 클릭
- RH+ Property List .mgt 파일을 선택하여 클릭



■ MIDAS Gen에서 규격확대 리스트 최적사이즈 변환하기

- 마이다스 프로그램에서 Steel Code Checking → Change → MGB파일열기 클릭
- RH plus Property List .mgb 파일을 선택하여 클릭
- Search Satisfied Section 클릭 후 원하는 부재를 선택하여 Change & Close 클릭



※ RH+ Property List 파일은 하기 연락처로 문의바랍니다.
현대제철 신수요개발팀 TEL 02-772-2188 E-MAIL jj0923@hyundai-steel.com